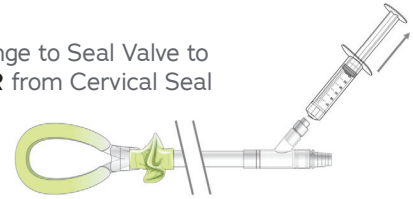


## 1. EVALUATE PATIENT & PREPARE JADA

**Evaluate patient** for lacerations, retained products of conception, or other causes of bleeding before using Jada.

**Connect a vacuum** canister and standard vacuum tubing to a regulated vacuum source.

Connect syringe to Seal Valve to **REMOVE AIR** from Cervical Seal before use.



## 2. INSERT JADA

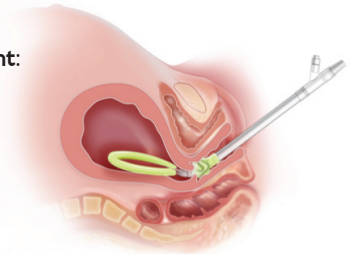
Grasp and compress Intrauterine Loop and **insert transvaginally**.



Use gentle traction on the anterior cervical lip to stabilize the cervical opening, if needed.

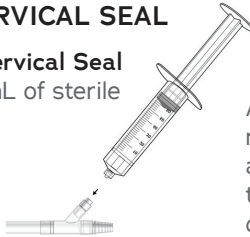
**Ensure correct placement:**

Intrauterine Loop within the uterus and Cervical Seal within the vagina at the external cervical os.



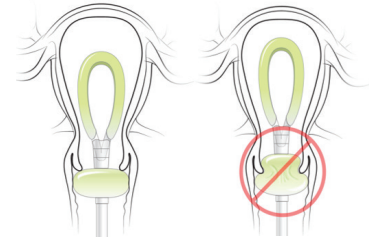
## 3. FILL CERVICAL SEAL

**Fill the Cervical Seal** with 60 mL of sterile fluid.

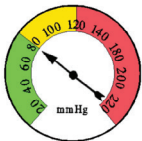


Add up to another 60 mL of fluid, if needed, to achieve full coverage of the external cervical os; do not exceed 120 mL.

**Do NOT advance** Cervical Seal into the uterus while filling. Confirm Cervical Seal is outside cervical os.



## 4. TURN ON & SET VACUUM, THEN CONNECT TUBING



**Turn on vacuum** source and set to 80 mm Hg (+/- 10 mm Hg) while occluding the end of the tubing. Maximum vacuum pressure is 90 mm Hg.

80 mm Hg = 1.5 psi = 10.7 kPa = 3.2 in Hg = 106.7 mbar

**Connect Jada** to vacuum tubing.

## 5. TREATMENT

- **Leave Jada in place** with vacuum applied, using tape to secure the Tube to the patient's inner thigh.
- Blood flow into the vacuum tubing and/or improvement in uterine tone should be noted after initiation of vacuum.
- After initial evacuation of any pooled blood, presentation may vary during treatment: there may be no further blood evacuation, or additional blood moving into the tubing, or accumulation of blood in the canister.
- **Verify bleeding is controlled.**
- **Leave vacuum on for at least one hour** after bleeding is controlled, and verify the uterus is firm and patient is stable before disconnecting vacuum.
- Consider prophylactic antibiotics for prolonged use.
- **Do not leave the Jada in place for >24 hours.**

## 6. VERIFY

- Ensure Tube remains secured with tape to patient's inner thigh.
- **Disconnect vacuum tubing** from Jada while vacuum is on.
- **Remove all sterile fluid** from Cervical Seal.
- **Wait at least 30 minutes** to verify bleeding is controlled.
- If bleeding recurs, repeat steps 3 – 6, if appropriate.

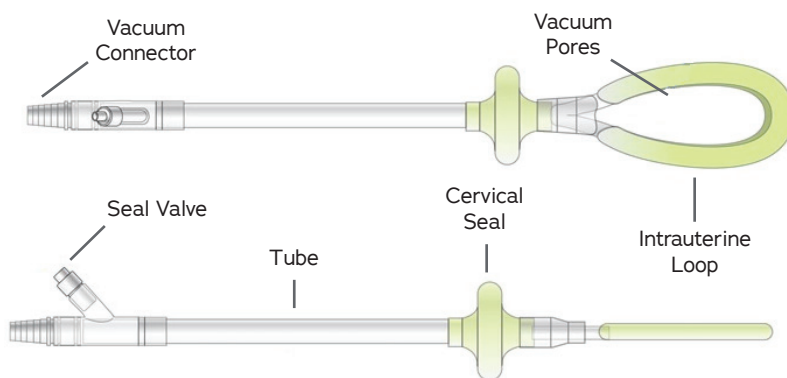
## 7. REMOVE JADA

- If bleeding remains controlled and the uterus remains firm, **remove the Jada slowly** while supporting the uterine fundus.

## TROUBLESHOOTING

SITUATION	RECOMMENDED ACTION
<p>Vacuum is not detected at the end of the vacuum tubing.</p>	<p>a) Check connection on all system components:</p> <ul style="list-style-type: none"> <li>• Confirm vacuum source is functional, including regulator.</li> <li>• Confirm lid of vacuum canister is fully seated and that canister is not cracked.</li> <li>• Confirm vacuum tubing is securely connected at both ends and any connection in between.</li> </ul> <p>b) Confirm desired vacuum level is regulated in the appropriate units (i.e. mm Hg vs. cm Hg).</p>
<p>Vacuum system is connected and working but uterus does not collapse and/or bleeding does not stop.</p>	<p>a) Increase vacuum pressure to maximum (90 mm Hg).</p> <p>b) Disconnect the vacuum tubing from Jada and occlude the end of the tubing to check vacuum.</p> <p>c) Confirm appropriate Jada placement, with ultrasound if needed:</p> <ul style="list-style-type: none"> <li>• Confirm proper placement of Intrauterine Loop in uterus (vs. misplacement in posterior vaginal fornix).</li> <li>• Confirm proper placement of Cervical Seal outside of the cervical os (vs. misplacement into uterus).</li> <li>• Ensure Cervical Seal is sufficiently filled with sterile fluid to create adequate seal at the cervix.</li> </ul> <p>d) Re-evaluate patient for other sources of bleeding.</p>

## JADA COMPONENTS



## MATERIALS REQUIRED BUT NOT SUPPLIED

- Regulated Vacuum Source
- Vacuum Canister
- Tape
- Sterile Vacuum Tubing: 10'-12'
- 60 mL Sterile Fluid (Max 120 mL)
- Sterile Luer Tapered Syringe: 60 mL recommended

CAUTION: Please refer to the Jada System Instructions for Use (IFU) for complete information. The Jada System IFU can be found at [www.alydiahealth.com/IFU](http://www.alydiahealth.com/IFU)

Federal law (USA) restricts the Jada System to sale by or on the order of a physician.

LBL-12 V3.0 | ©2020 Alydia Health.

Alydia  
HEALTH